



**CID Device up to 4 Telephone Lines**

Intelligent USB

# **CID Device**

**Installation Manual**


**Korea MutaTech, Inc**

# Contents

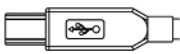
|   |    |
|---|----|
| 1. CID Device Hardware Installation .....   | 2  |
| 2. CID Device Driver Installation .....     | 2  |
| 2.1 Installing driver on Windows 98 .....   | 2  |
| 2.2 Installing driver on Windows 2000 ..... | 5  |
| 2.3 Installing drever on Windows XP .....   | 8  |
| 3. CID Device Driver Reinstallation .....   | 13 |
| 3.1 Driver Deletion on Window 98 .....      | 13 |
| 3.2 Driver Deletion on Window 2000 .....    | 13 |
| 3.3 Driver Deletion on Window XP .....      | 14 |

## 1. CID Device Hardware Installation

Follow the steps below to install a CID Device Hardware on your PC.

**Step 1** Connect the plug(  ) of USB cable to the USB terminal on the back/front of the computer body.



**Step 2** Connect the plug(  ) of USB cable to the USB jack of the CID Device hardware.

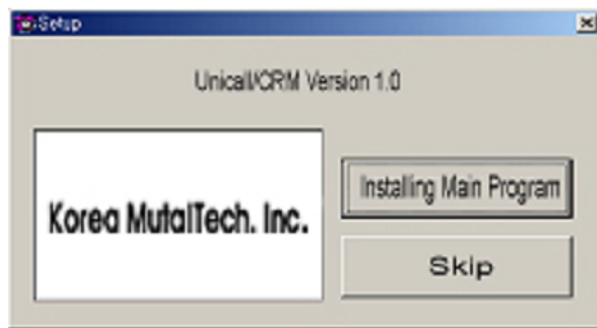


**Step 3** Select port no. on the bottom of the device corresponding to the phone no. Complete the CID Device hardware installation by plugging telephone line and phone line into the two jacks regardless of its location of the CID device hardware.



## 2. CID Device Driver Installation

If you insert the program CD into CD-ROM, 'Setup' screen automatically pops up. Click <Skip> button.



## 1.1 Installing Driver on Windows 98

**Step 1** When you install the CID Device hardware, Windows automatically detects it and shows 'Add New Hardware Wizard' window. Click<Next>.

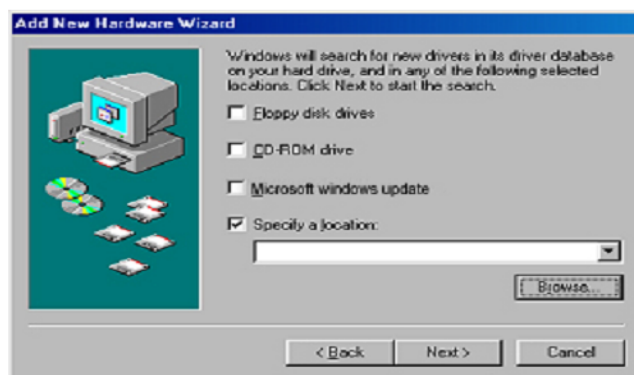


**Step 2** Select 'Search for the best driver for your device (Recommended)' and click <next>.

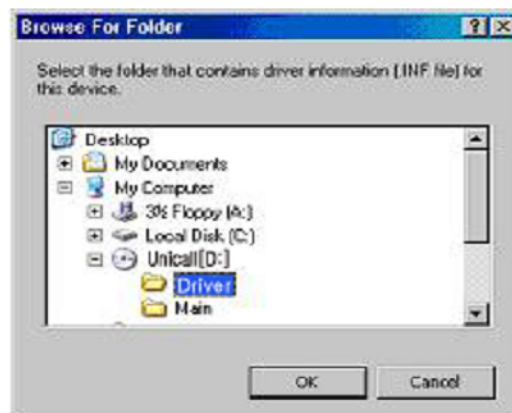


**Step 3** Insert the program CD into CD-ROM.

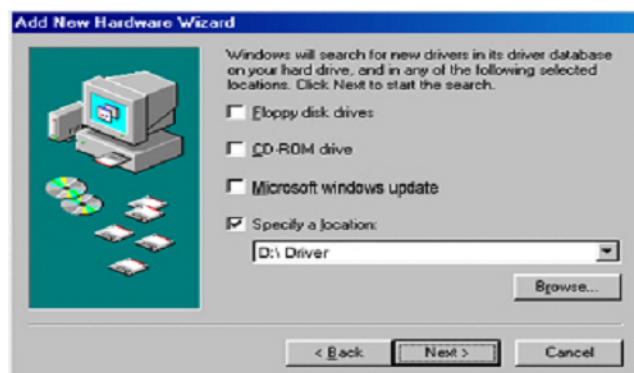
**Step 4** Select 'Specify a location' and click <Browse>.



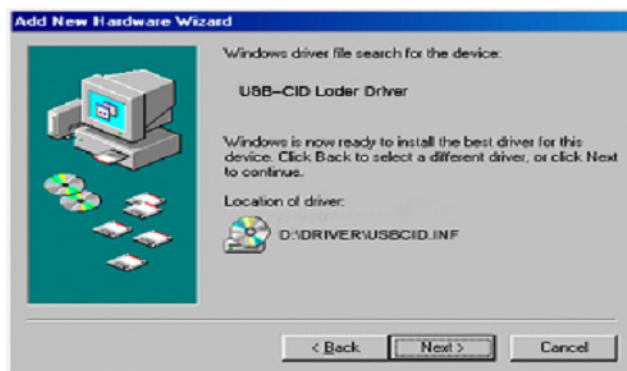
**Step 5** Select the directory where CID Device is located (CD-ROM->Driver) and click <OK>.



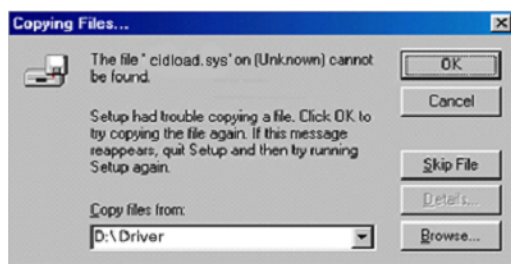
**Step 6** Click <Next>.



**Step 7** Click <Next>.



**Step 8** Make sure the route in Step 5 and click <OK>.



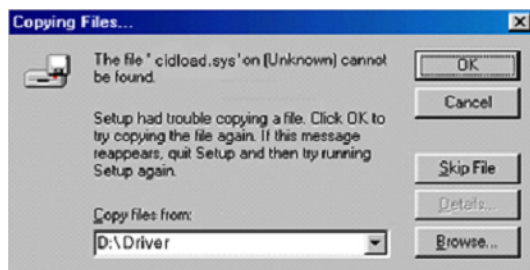
※ In case you reinstall the driver after Removing it, there are instances the

step 8 process are skipped automatically.

**Step 9** Select the directory where CID Device is located (CD-ROM->Driver) and 'cidload.sys' click <OK>.



**Step 10** Click <OK>.



**Step 11** click <Finish> and the installation is completed.



**Step 12** For a second later, a window pops up, then will be vanished.



**Step 13** Take out program CD from CD-ROM.

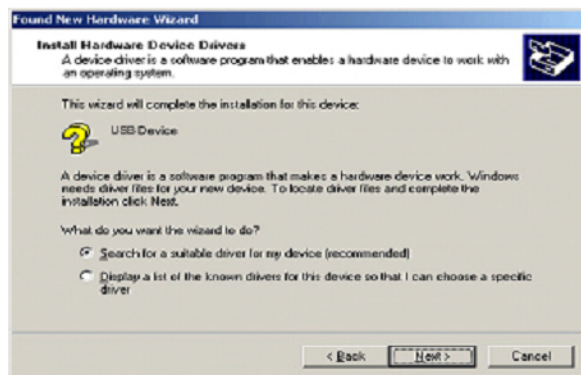
## 1.2 Installing Driver on Windows 2000

**Step 1** When you install the CID Device hardware, Windows automatically detects it and shows 'Add New Hardware Wizard' window. Click<Next>.

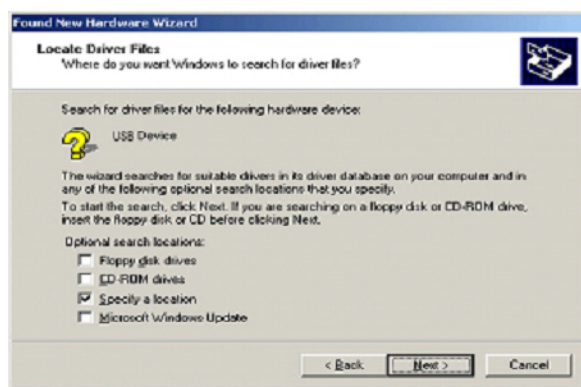


**Step 2** Select 'Search for the best driver for your device (Recommended)' and click <next>.



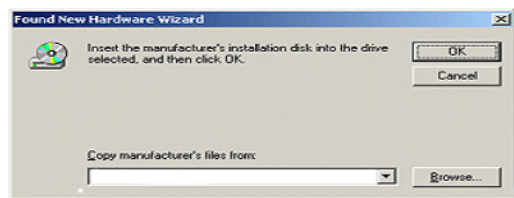


**Step 3** Select 'Specify a location' and click <Next>.

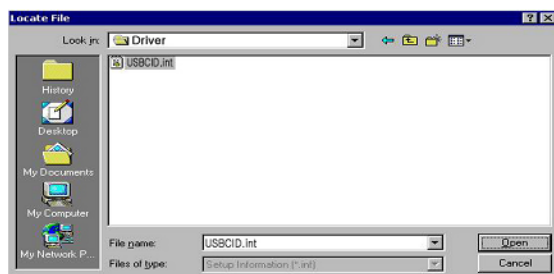


**Step 4** Insert the program CD into CD-ROM.

**Step 5** Click <Browse>.

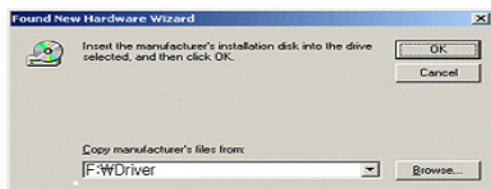


**Step 6** Select the directory where CID Device is located (CD-ROM->Driver). Click 'USBCID.inf' file, then <Open>.



**Step 7** Click <OK>.





**Step 8** Click <OK>.



**Step 9** Click <Finish> and the installation of driver is completed.



**Step 10** For a second later, a window pops up, then will be banished.



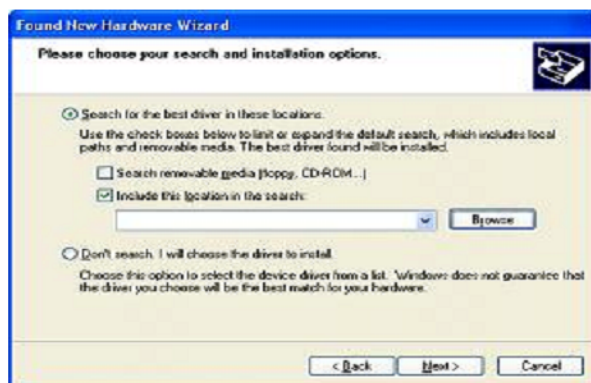
**Step 11** Take out the program CD from CD-ROM.

### 1.3 Installing Driver on Windows XP

**Step 1** When you install the CID Device hardware, Windows automatically detects it and shows 'Found New Hardware Wizard' window. Click <Next>.



**Step 2** Select 'Include this location in the search' and <Browse>.

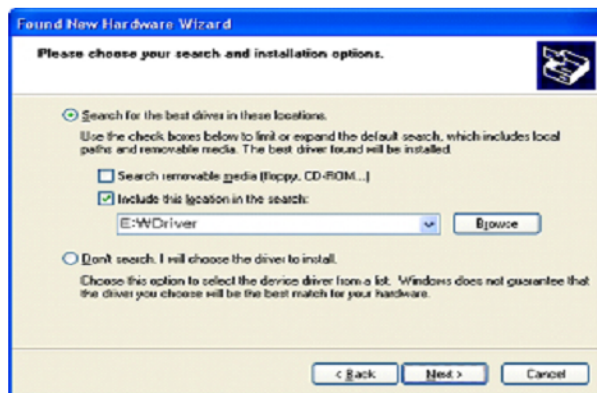


**Step 3** Insert the program CD into CD-ROM.

**Step 4** Select the location where the driver is (CD-ROM->Driver), and then click <OK>.



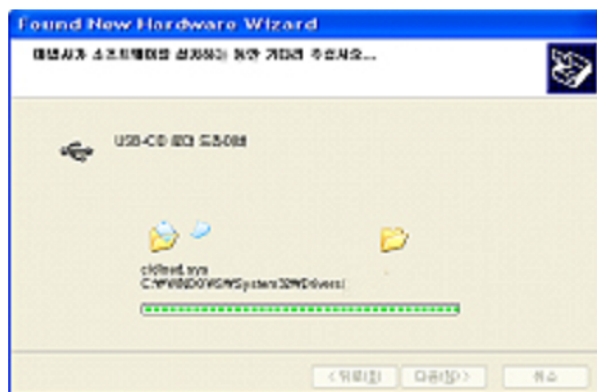
**Step 5** Click <Next>.



**Step 6** Click <Next>.



**Step 7** Installation is in progress. wait till completed.



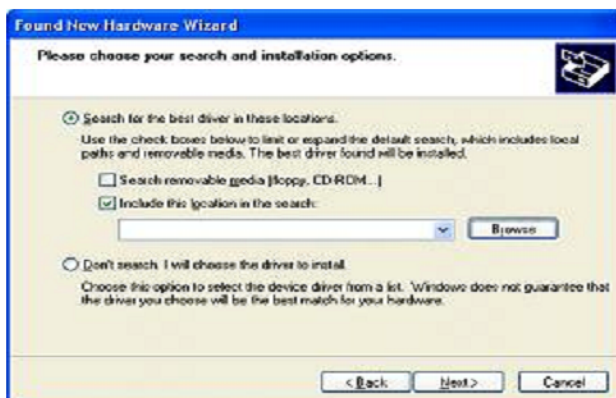
**Step 8** Click <Finish> and 'USB-CID loader driver' installation is completed.



**Step 9** For a second later, 'Found New Hardware Wizard' window that is the installation of 'USB-CID loader driver' shows up. Click <Next>.



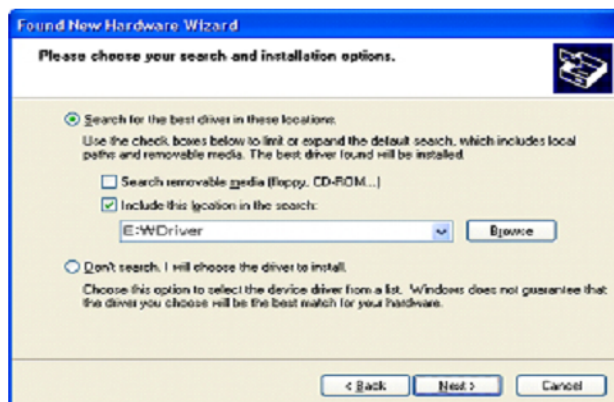
**Step 10** Select 'Include this location in the search' and click <Browse>.



**Step 11** Select the location where the driver is (CD-ROM->Driver), and then click <OK>.



**Step 12** Select 'include this location in the search' and click <Browse>.



**Step 13** Click <Continue Anyway>.



**Step 14** Installation is in progress. Wait till completed.



**Step 15** Click <Finish> and 'USB-CID driver' is completed.



**Step 16** Take out the Program CD from CD-ROM.

### 3. CID Device Reinstallation

When the CID Device driver is updated or CID Device driver not operated properly, the existing driver needs to be deleted and reinstalled.

#### ◆ Driver Deletion

##### 3.1 Deleting Driver on Window 98

**Step 1** Check the connection between the CID Device and PC.

**Step 2** Click 'Windows Explorer' from the Windows screen (Start->Programs).

**Step 3** Select the location 'c:\windows\inf\other' on the 'Windows Explorer'.

**Step 4** Delete 'KMTUSBCID.inf' file on 'other' folder.

**Step 5** Go to '~~c:\Windows\~~system32\drivers' on the 'Windows Explorer'.

**Step 6** Delete 'cidload.sys' and 'fdriver.sys' files on 'drivers' folder.

**Step 7** Click (Start -> setting -> control panel) and double click 'System'.

**Step 8** When 'System properties' windows pops up, click 'device manager' tab.

**Step 9** On the 'Device manager' screen, select sub-menu of 'USB controller'.

**Step 10** select 'USB-CID loader driver', click the right button of your mouse, and select 'Remove'.

**Step 11** Remove the CID Device from the PC and for a second later, reconnect the CID Device.

**Step 12** Click 'Renew' on the 'Device manager' screen.

**Step 13** When you see a yellow question mark on the 'USB-CID loader driver', click the right button of your mouse, and the 'Remove'.

**Step 14** Remove the CID Device from your PC and 'deleting driver' process will be completed.

### **3.2 Deleting Driver on Window 2000**

**Step 1** Check the connection between the CID Device and PC.

**Step 2** Click ' Windows Explorer' from the Windows screen (Start->Programs-> Accessories).

**Step 3** Select location '~~c:\Windows\~~Winnt\Winf' on the 'Windows Explorer'.

**Step 4** Double click all 'inf' files that named 'oem' letters with starting, and find the files which are match up to 'Korea MutalTech, inc.' on the first line of the file's name.

**Step 5** Delete all the files that you searched in step 4.

**Step 6** Go to '~~c:\Windows\~~Winnt\system32\drivers' on the 'Windows Explorer'.

**Step 7** Select 'cidload.sys' and 'fdriver.sys' file on the 'drivers' folder, and delete.

**Step 8** Click (Start -> Setting -> control Panel), then double click 'System'.



**Step 9** When 'System properties' window pops up, click 'device manager' on the 'Hardware' tab.

**Step 10** Select sub-menu of 'Universal Serial Bus controllers' on the 'device manager' window.

**Step 11** Locate your mouse pointer on the 'USB-CID Driver' item, then click the right button of your mouse, and select 'Remove'.

**Step 12** Remove the CID Device from your PC and for a second later, reconnect the CID Device.

**Step 13** When you see a yellow question mark on the 'USB-CID loader driver', click the right button of your mouse, and the 'Remove'.

**Step 14** Remove the CID Device from your PC and 'deleting driver' process will be completed.

### **3.3 Deleting Driver on Window XP**

**Step 1** Check the connection between the CID Device and PC.

**Step 2** Click 'Windows Explorer' from the Windows screen (Start->Programs-> Accessories).

**Step 3** Select location 'c:\windows\inf' on the 'Windows Explorer'.

**Step 4** Double click all 'inf' files that named 'oem' letters with starting, and find the files which are match up to 'Korea MutalTech, inc.' on the first line of the file's name.

**Step 5** Delete all the files that you searched in step 4.

**Step 6** Go to 'c:\windows\system32\drivers' on the 'Windows Explorer'.

**Step 7** Select 'cidload.sys' and 'fdriver.sys' file on the 'drivers' folder, and delete.

**Step 8** Click (Start -> Setting -> control Panel), then double click 'System'.

**Step 9** When 'System properties' window pops up, click 'device manager' on the 'Hardware' tab.

**Step 10** Select sub-menu of 'Universal Serial Bus controllers' on the 'device manager' window.

**Step 11** Locate your mouse pointer on the 'USB-CID Driver' item, then click the right button of your mouse, and select 'Remove'.

**Step 12** Remove the CID Device from your PC and for a second later, reconnect the CID Device.

**Step 13** When you see a yellow question mark on the 'USB-CID loader driver' on the 'Device manager' screen, click the right button of your mouse, and the 'Remove'.

**Step 14** Remove the CID Device from your PC, then 'deleting driver' process will be completed.

#### ◆ Driver Reinstallation

Reinstall according to the procedure for 2. CID Device Driver Installation.

Customer Relationship Management System

***Unicall<sup>®</sup>/CRM***