

For EverFree and Unicall

PC Based(Patent No.: 0391048)

Gateway

Installation Manual

Korea MutalTech, Inc.

Contents

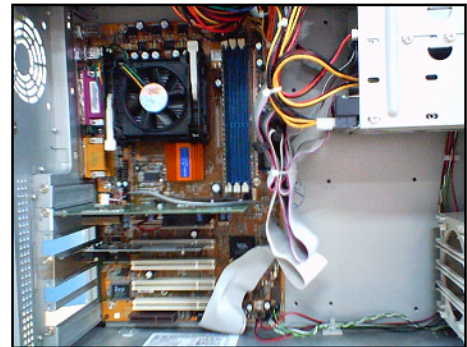
PART I PCI Gateway	3
1. Gateway Hardware Installation	3
2. Gateway Driver Installation	4
2.1 Installing driver on Windows 98	4
2.2 Installing driver on Windows 2000	6
2.3 Installing driver on Windows XP	8
3. Gateway Driver Reinstallation	10
3.1 Driver Deletion	10
3.2 Driver Reinstallation	11
PART II USB Gateway	12
1. Gateway Hardware Installation	12
2. Gateway Driver Installation	12
2.1 Installing driver on Windows 98	12
2.2 Installing driver on Windows 2000	15
2.3 Installing driver on Windows XP	17
3. Gateway Driver Reinstallation	22
3.1 Driver Deletion	23
3.2 Driver Reinstallation	24

PART I PCI Gateway

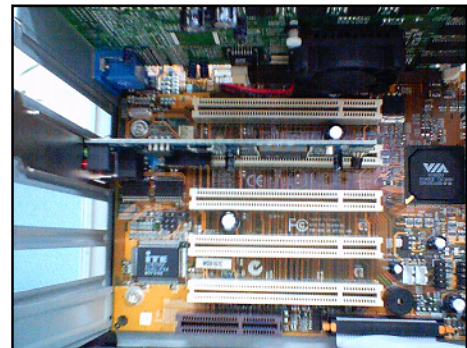
1. Gateway Hardware Installation

Follow the steps below to install a gateway card on your PC.

Step 1 Power off the computer and take off the cover of the computer body.



Step 2 Among PCI slots inside of the computer body, select an appropriate slot the gateway card to be inserted.



Step 3 When inserting the gateway card in a slot, do not exert too much force and insert it perpendicular to the board without touching other cards.

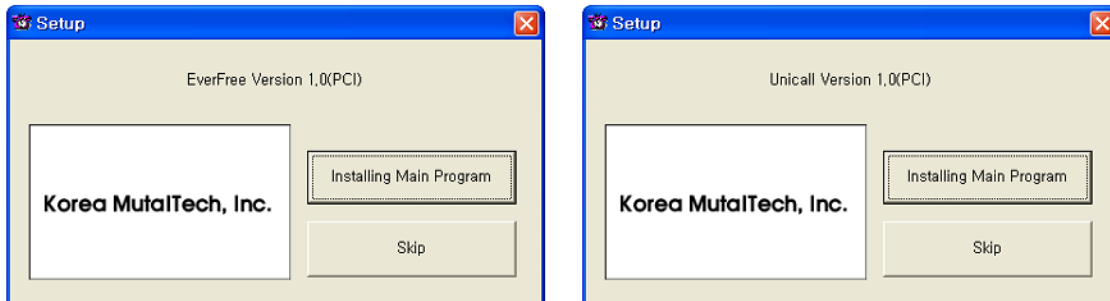
Step 4 Fix the gateway card bracket to the computer body and place the cover of the computer body.

Step 5 Complete the gateway card installation by plugging telephone line and phone line into the two jacks regardless of its location on the gateway bracket card of the back of the computer body.



2. Gateway Driver Installation

If you insert the program CD into CD-ROM, 'Setup' screen automatically pops up. Click <Skip> button.



2.1 Installing Driver on Windows 98

Step 1 When the PC power is turned on, Windows automatically detects the gateway hardware and shows the below. Click <Next>.



Step 2 Select 'Search for the best driver for your device.(Recommended)' and click <Next>.

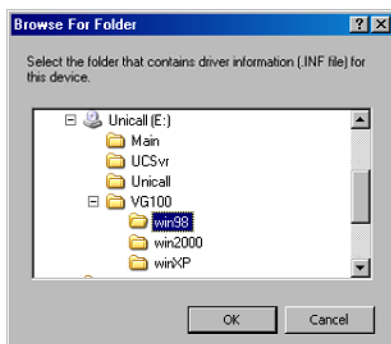


Step 3 Select 'Specify a location' and click <Browse>.



Step 4 Insert the program CD into CD-ROM.

Step 5 Select the location where the driver is (CD-ROM -> VG100 -> win98), and then click <OK>.



Step 6 Click <Next>.



Step 7 Click <Next>.



Step 8 Click <Finish> and the installation of driver is completed.



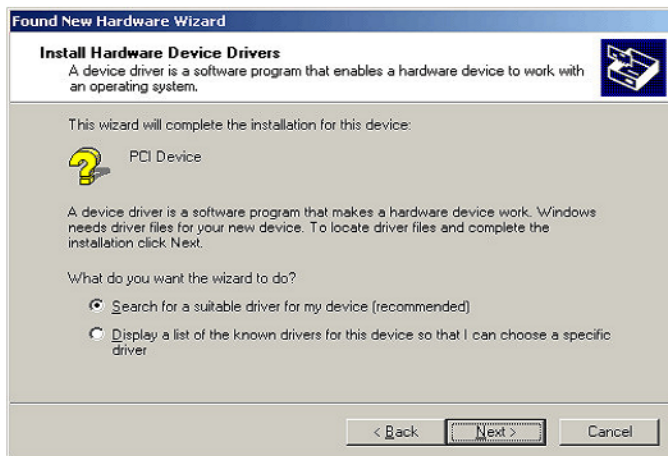
Step 9 Take out the program CD from CD-ROM.

2.2 Installing Driver on Windows 2000

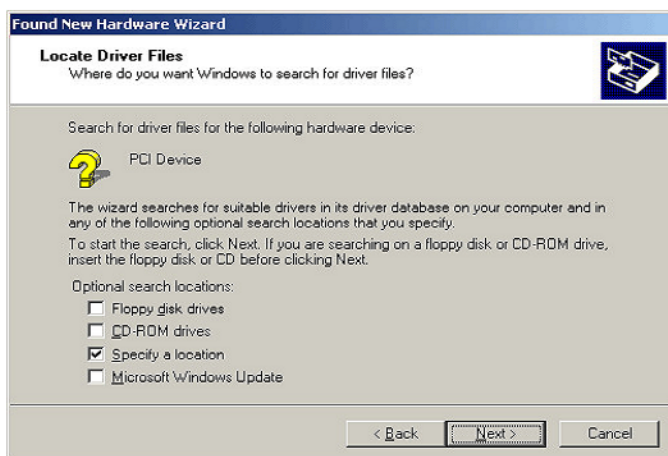
Step 1 If you turn on the power of the computer, Windows automatically detects the gateway hardware and shows window. Click <Next>.



Step 2 ‘Search for a suitable driver for my device(recommended)’ and click <Next>.



Step 3 Select ‘Specify a location’ and click <Next>.

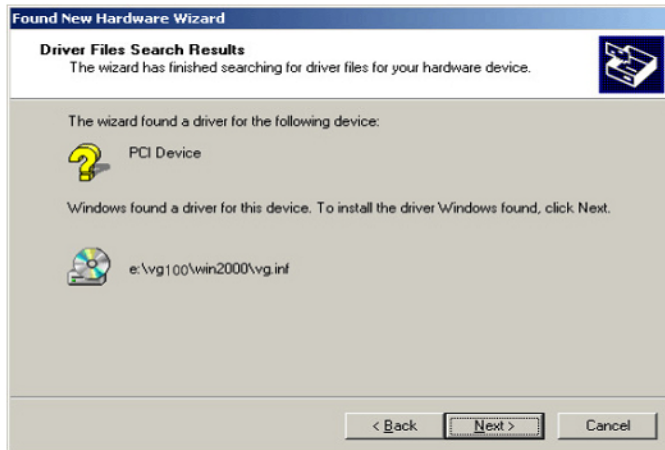


Step 4 Insert the program CD into CD-ROM.

Step 5 Click <Browse> and select “VG.inf” file from(CD-ROM -> VG100 -> win2000), and then click <OK>.



Step 6 Click <Next>.



Step 7 Click <Finish> and the installation is completed.



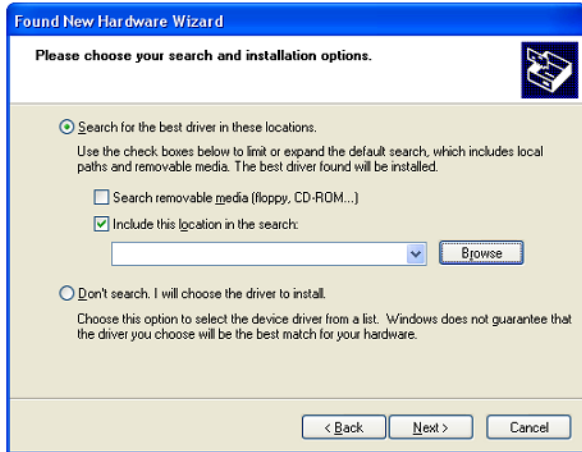
Step 8 Take out program CD from CD-ROM.

2.3 Installing Driver on Windows XP

Step 1 When you power on PC, Windows recognize the gateway and put the window below. Select 'Install from a list or specific location(Advanced)' and click <Next>.



Step 2 Select 'Include this location in the search:' and click <Browse>.

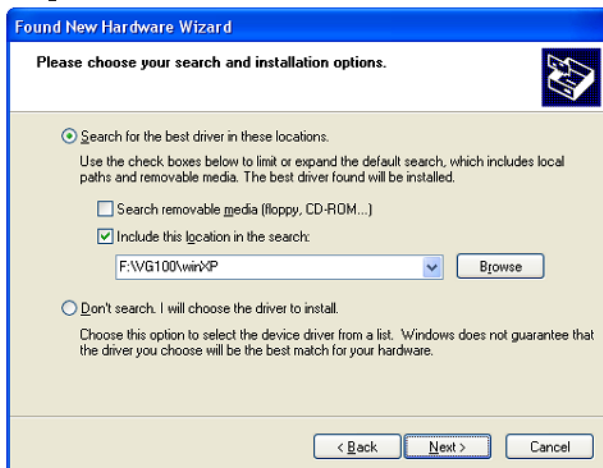


Step 3 Insert the program CD into CD-ROM.

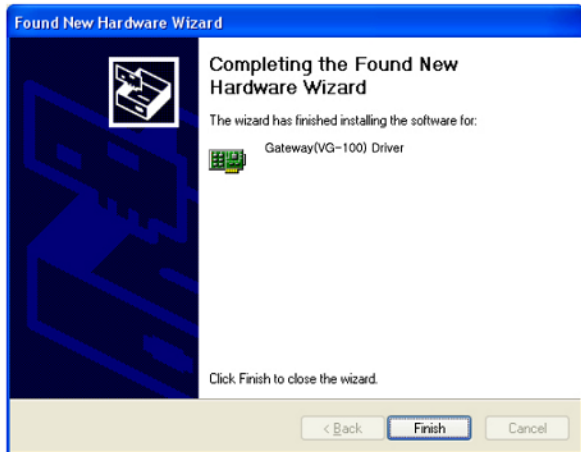
Step 4 Select the location where the driver is (CD-ROM -> VG100 -> winXP), and then click <OK>.



Step 5 Click <Next>.



Step 6 Click <Finish> and the installation of driver is completed.



Step 7 Take out program CD from CD-ROM.

3. Gateway Driver Reinstallation

When the gateway driver is updated or it does not operate properly, the existing driver needs to be deleted and reinstalled.

3.1 Driver Deletion

① Deleting Driver on Windows 98

Step 1 Make sure the gateway is inserted into the PC slot.

Step 2 Click 'Windows Explorer' from the Windows screen (Start -> Programs).

Step 3 Select the location 'c:\windows\inf\other' on the 'Windows Explorer'.

Step 4 Delete 'Korea MutalTech, Inc.VG.INF' file on 'other' folder.

Step 5 Select the location 'c:\windows\system32\drivers' on the 'Windows Explorer'.

Step 6 Select 'vgbp.sys' file on the 'drivers' folder, then click 'Delete'.

Step 7 Click(Start -> Setting -> Control Panel) and double click 'System'.

Step 8 When 'System properties' window shows up, click 'device manager'.

Step 9 Select sub-folder of 'KMT' on the 'device manager' window.

Step 10 Locate your mouse pointer on the 'Gateway(VG-100) Driver' item, then click the right button of your mouse, and select 'Remove'.

② Deleting Driver on Windows 2000

Step 1 Make sure the gateway is inserted into the PC slot.

Step 2 Click 'Windows Explorer' from the Windows screen(Start -> Programs -> Accessories).

Step 3 Select location 'c:\winnt\inf' on the 'Windows Explorer'.

Step 4 Double click all 'inf' files that named 'oem' letters with starting, and find the files which are match up to ';Korea MutalTech, inc.' on the first line of the file's name.

Step 5 Delete all the files that you searched in Step 4.

Step 6 Go to 'c:\winnt\system32\drivers' on the 'Windows Explorer'.

Step 7 Select 'vgbp.sys' file on the 'drivers' folder, and delete.

Step 8 Click (Start -> Setting -> Control Panel), then double click 'System'.

Step 9 When 'System properties' window pops up, click 'device manager' on the 'Hardware' tap.

Step 10 Select sub-folder of 'KMT' on the 'device manager' window.

Step 11 Locate your mouse pointer on the 'Gateway(VG-100) Driver' item, then click the right button of your mouse, and select 'Remove'.

③ Deleting Driver on Winodows XP

Step 1 Make sure the gateway is inserted into the PC slot.

Step 2 Click 'Windows Explorer' from the Windows screen(Start -> Programs -> Accessories).

Step 3 Select location 'c:\windows\inf' on the 'Windows Explorer'.

Step 4 Double click all 'inf' files that named 'oem' letters with starting, and find the files which are match up to ';Korea MutalTech, inc.' on the first line of the file's name.

Step 5 Delete all the files that you searched in Step 4.

Step 6 Go to 'c:\windows\system32\drivers' on the 'Windows Explorer'.

Step 7 Select 'vgbp.sys' file on the 'drivers' folder, and delete.

Step 8 Click (Start -> Setting -> Control Panel), then double click 'System'.

Step 9 When 'System properties' window pops up, click 'device manger' on the 'Hardware' tap.

Step 10 Select sub-folder of 'KMT' on the 'device manager' window.

Step 11 Locate your mouse pointer on the 'Gateway(VG-100) Driver' item, then click the right button of your mouse, and select 'Remove'.

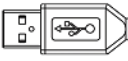
3.2 Driver Reinstallation

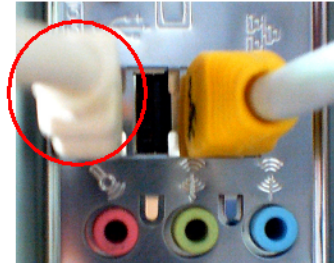
Reinstall according to the procedure for **2. Gateway Driver Installation.**


PART II USB Gateway

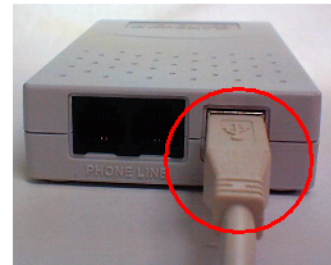
1. Gateway Hardware Installation

Follow the steps below to install a gateway hardware on your PC.

Step 1 Connect the plug() of USB cable to the USB terminal on the back/front of the computer body.



Step 2 Connect the plug() of USB cable to the USB jack of the gateway hardware.

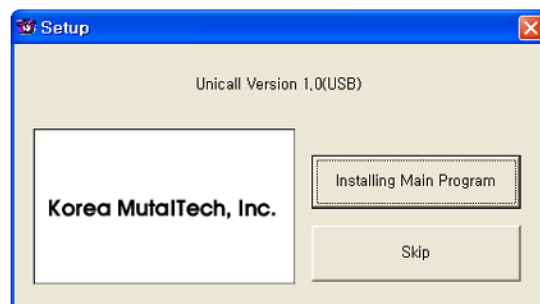
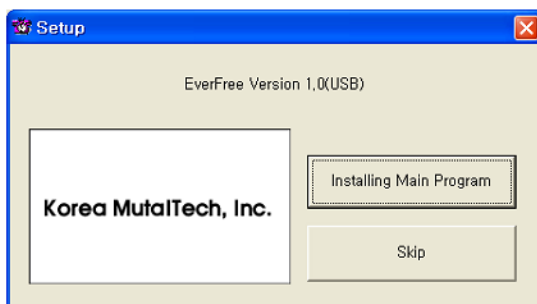


Step 3 Complete the gateway hardware installation by plugging telephone line and phone line into the two jacks regardless of its location of the gateway hardware.



2. Gateway Driver Installation

If you insert the program CD into CD-ROM, 'Setup' screen automatically pops up. Click <Skip> button.



2.1 Installing Driver on Windows 98

Step 1 When you install the gateway hardware, Windows automatically detects it and shows

‘Add New Hardware Wizard’ window. Click <Next>.

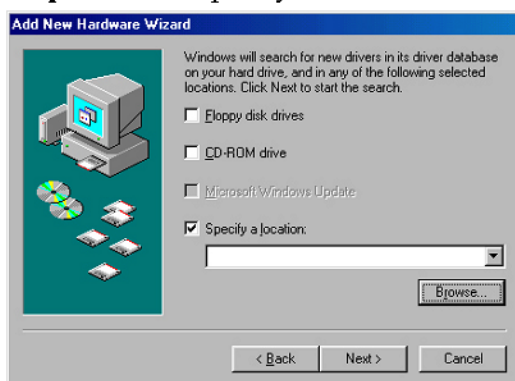


Step 2 Select ‘Search for the best driver for your device.(Recommended)’ and click <Next>.

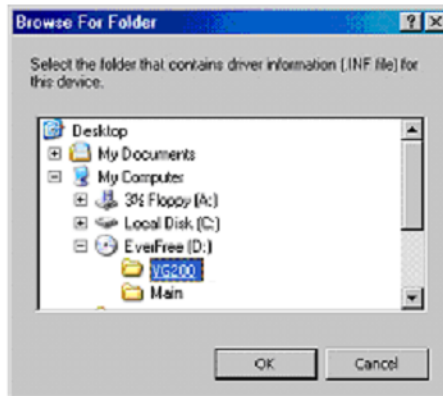


Step 3 Insert the program CD into CD-ROM.

Step 4 Select ‘Specify a location’ and click <Browse>.



Step 5 Select the directory where gateway is located(CD-ROM -> VG200) and click <OK>.



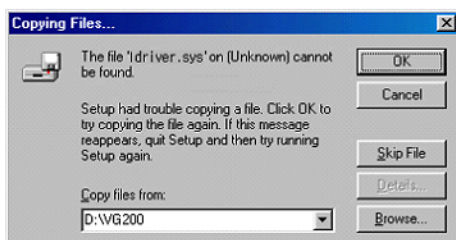
Step 6 Click <Next>.



Step 7 Click <Next>.



Step 8 Make sure the route in Step 5 and click<OK>.



※ In case you reinstall the driver after removing it, there are instances the step 8 process are skipped automatically.

Step 9 Click <Finish> and the installation is completed.



Step 10 For a second later, a window pops up, then will be vanished.



Step 11 Take out program CD from CD-ROM.

2.2 Installing Driver on Windows 2000

Step 1 When you install the gateway hardware, Windows automatically detects it and shows 'Found New Hardware Wizard' window. Click <Next>.



Step 2 Select 'Search for a suitable driver for my device(recommended)' and click <Next>.



Step 3 Select 'Specify a location' and click <Next>.

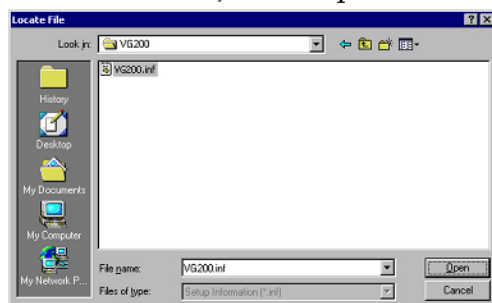


Step 4 Insert the program CD into CD-ROM.

Step 5 Click <Browse>.



Step 6 Select the directory where gateway is located(CD-ROM -> VG200). Click 'VG200.inf' file, then <Open>.



Step 7 Click <OK>.



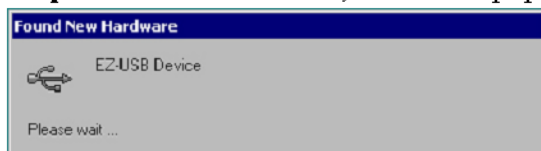
Step 8 Click <Next>.



Step 9 Click <Finish> and the installation of driver is completed.



Step 10 For a second later, a window pops up, then will be vanished.



Step 11 Take out the program CD from CD-ROM.

2.3 Installing Driver on Windows XP

Step 1 When you install the gateway hardware, Windows automatically detects it and shows

'Found New Hardware Wizard' window. Click <Next>.



Step 2 Select 'Include this location in the search' and <Browse>.

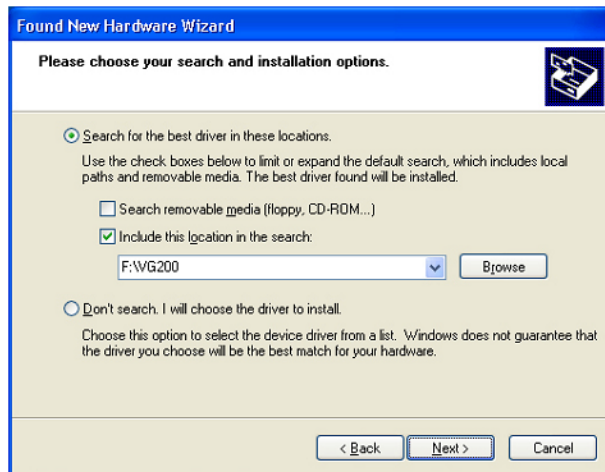


Step 3 Insert the program CD into CD-ROM.

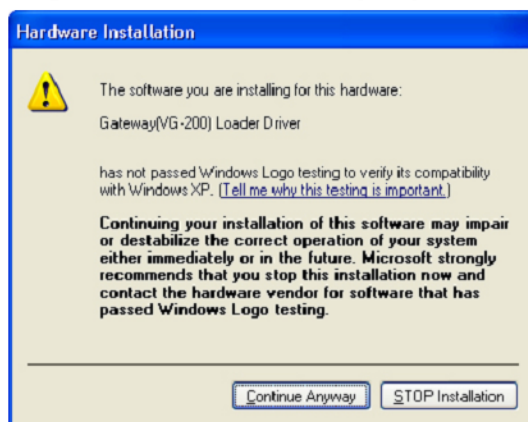
Step 4 Select the location where the driver is(CD-ROM -> VG200), and then click <OK>.



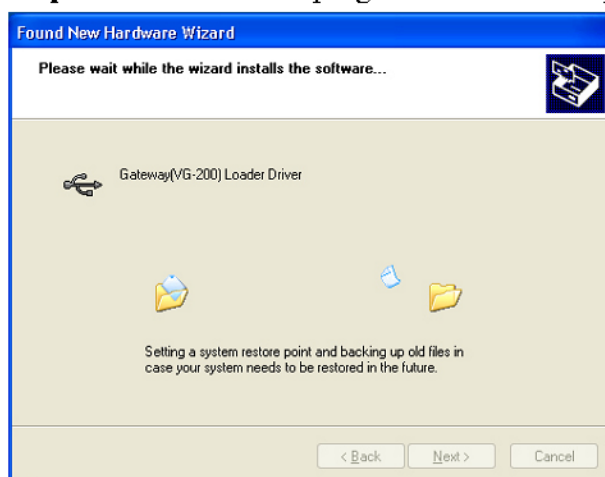
Step 5 Click <Next>.



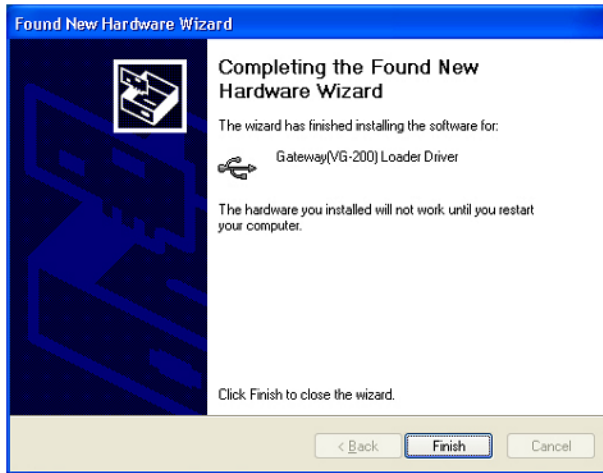
Step 6 Click <Continue Anyway>.



Step 7 Installation is in progress. Wait till completed.



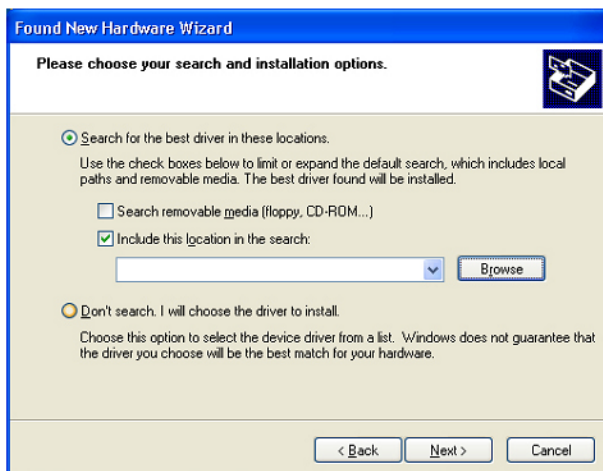
Step 8 Click <Finish> and ‘Gateway(VG-200) Loader Driver’ installation is completed.



Step 9 For a second later, ‘Found New Hardware Wizard’ window that is the installation of ‘Gateway(VG -200) Driver’ shows up. `Click <Next>`.



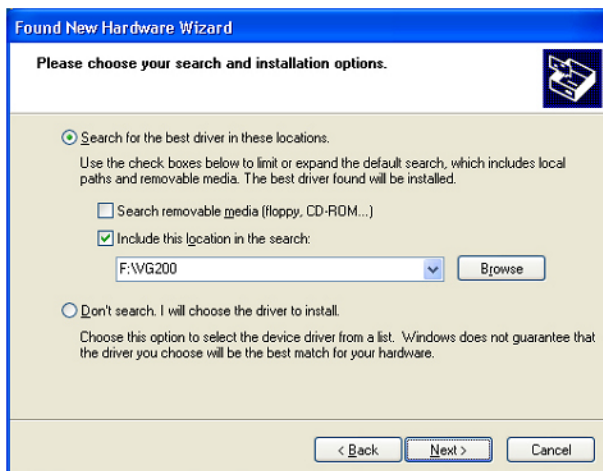
Step 10 Select ‘Include this location in the search’ and click <Browse>.



Step 11 Select the location where the driver is(CD-ROM -> VG200), and then click <OK>.



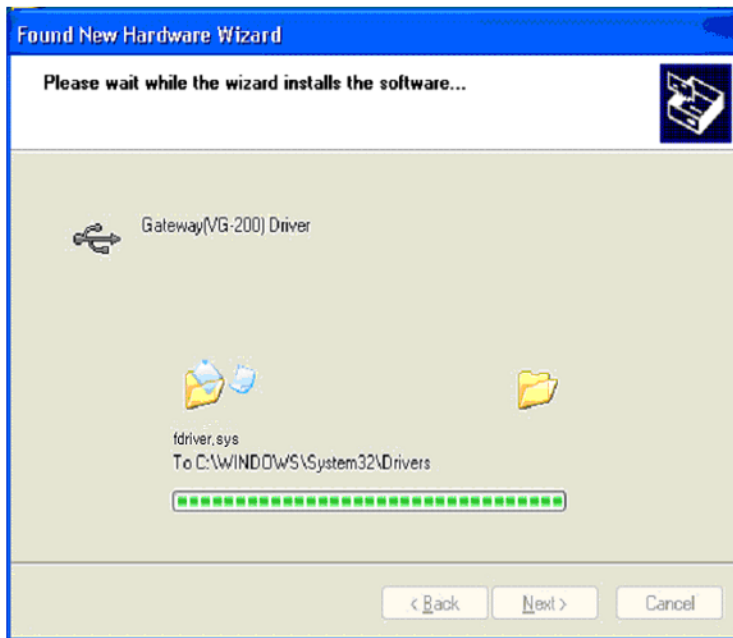
Step 12 Select 'Include this location in the search' and click <Browse>.



Step 13 Click <Continue Anyway>.



Step 14 Installation is in progress. Wait till completed.



Step 15 Click <Finish> and 'Gateway(VG-200) Driver' is completed.



Step 16 Take out the Program CD from CD-ROM.

3. Gateway Driver Reinstallation

When the gateway driver is updated or gateway driver does not operated properly, the existing driver needs to be deleted and reinstalled.

3.1 Driver Deletion

① Deleting Driver on Windows 98

Step 1 Check the connection between the gateway and PC.

Step 2 Click 'Windows Explorer' from the Windows screen(Start -> Programs).

Step 3 Select the location 'c:\windows\inf\other' on the 'Windows Explorer'.

Step 4 Delete 'KMTVG200.INF' file on 'other' folder.

Step 5 Go to 'c:\windows\system32\drivers' on the 'Windows Explorer'.

Step 6 Delete 'ldriver.sys' and 'fdriver.sys' files on 'drivers' folder.

Step 7 Click (Start -> Setting -> Control Panel) and double click 'System'.

Step 8 When 'System properties' window pops up, click 'device manager' tab.

Step 9 On the 'Device manager' screen, select sub-menu of 'USB controller'.

Step 10 Select 'Gateway(VG-200) Loader Driver', click the right button of your mouse, and select 'Remove'.

Step 11 Remove the gateway from the PC and for a second later, reconnect the gateway.

Step 12 Click 'Renew' on the 'Device manager' screen.

Step 13 When you see a yellow question mark on the 'Gateway(VG-200) Loader Driver', click the right button of your mouse, and the 'Remove'.

Step 14 Remove the gateway from your PC and 'deleting driver' process will be completed.

② Deleting Driver on Windows 2000

Step 1 Check the connection between the gateway and PC.

Step 2 Click 'Windows Explorer' from the Windows screen(Start -> Programs -> Accessories).

Step 3 Select location 'c:\winnt\inf' on the 'Windows Explorer'.

Step 4 Double click all 'inf' files that named 'oem' letters with starting, and find the files which are match up to ';Korea MutalTech, inc.' on the first line of the file's name.

Step 5 Delete all the files that you searched in Step 4.

Step 6 Go to 'c:\winnt\system32\drivers' on the 'Windows Explorer'.

Step 7 Select 'ldriver.sys' and 'fdriver.sys' file on the 'drivers' folder, and delete.

Step 8 Click (Start -> Setting -> Control Panel), then double click 'System'.

Step 9 When 'System properties' window pops up, click 'device manger' on the 'Hardware' tap.

Step 10 Select sub-menu of 'Universal Serial Bus controllers' on the 'device manager' window.

Step 11 Locate your mouse pointer on the 'Gateway(VG-200) Driver' item, then click the right button of your mouse, and select 'Remove'.

Step 12 Remove the gateway from your PC and for a second later, reconnect the gateway.

Step 13 When you see a yellow question mark on the 'Gateway(VG-200) Loader Driver', click the right button of your mouse, and the 'Remove'.

Step 14 Remove the gateway from your PC and 'deleting driver' process will be completed.

③ Deleting Driver on Windows XP

Step 1 Check the connection between the gateway and PC.

Step 2 Click 'Windows Explorer' from the Windows screen(Start -> Programs -> Accessories).

Step 3 Select location 'c:\windows\inf' on the 'Windows Explorer'.

Step 4 Double click all the 'inf' files that named 'oem' letters with starting, and find the files which are match up to ';Korea MutalTech, inc.' on the first line of the file's name.

Step 5 Delete all the files that you searched in Step 4.

Step 6 Go to 'c:\windows\system32\drivers' on the 'Windows Explorer'.

Step 7 Select 'ldriver.sys' and 'fdriver.sys' file on the 'drivers' folder, and delete.

Step 8 Click (Start -> Setting -> Control Panel), then double click 'System'.

Step 9 When 'System properties' window pops up, click 'device manger' on the 'Hardware' tap.

Step 10 Select sub-menu of 'Universal Serial Bus controllers' on the 'Device Manager' window.

Step 11 Locate your mouse pointer on the 'Gateway(VG-200) Driver' item, then click the right button of your mouse, and select 'Remove'.

Step 12 Remove the gateway from your PC, and for a second later, reconnect the gateway.

Step 13 When you see a yellow question mark on the 'Gateway(VG-200) Loader Driver' on the 'Device manager' screen, click the right button of your mouse, and the 'Remove'.

Step 14 Remove the gateway from your PC, then 'deleting driver' process will be completed.

3.2 Driver Reinstallation

Reinstall according to procedure for **2. Gateway Driver Installation**

EverFree®

Unicall®